



# WORLDWIDE ELECTRIC MOTOR DATA SHEET

## PEWWE250-18-449T



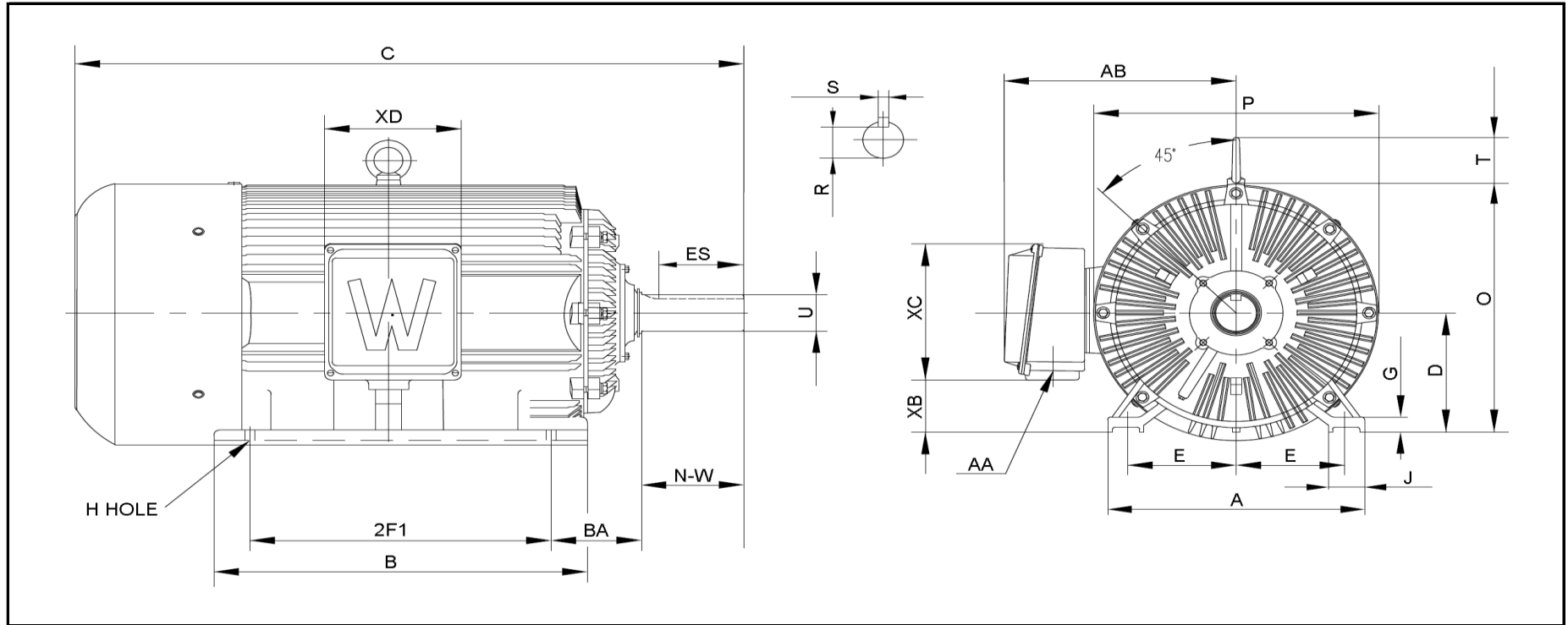
HORSEPOWER	250
RPM / POLES	1800 / 4
VOLTAGE / PHASE	460 V / 3
FRAME	449T
ENCLOSURE / DEGREE OF PROTECTION	TEFC / IP55
FREQUENCY	60 HZ
FULL LOAD SPEED	1790 RPM
SERVICE FACTOR	1.15
INSULATION CLASS	F
FULL LOAD AMPS	280 A
LOCKED ROTOR AMPS (STARTING)	1825 A
NO LOAD CURRENT	91.5 A
NEMA CODE LETTER	G
EFFICIENCY / POWER FACTOR	<u>LOAD</u> <u>EFF.</u> <u>P.F.</u>
	100 %                      96.2%                      0.87
	75 %                      96.3%                      0.84
50 %                      95.8%                      0.75	
DUTY CYCLE	S1 / Continuous
TORQUE	<u>FULL LOAD</u> <u>LRT</u> <u>BDT</u>
	733 lb.ft.                      200%                      260%
SLIP	0.56 %
NEMA DESIGN	B
MOMENT OF INERTIA	82.7 lb.ft. <sup>2</sup>
MAX. TIME LOCKED ROTOR (Hot)	11 Seconds
SOUND PRESSURE LEVEL	83 dB (A)
MAX. AMBIENT TEMPERATURE	40° C
MAX. ELEVATION	3300 Ft.
TEMPERATURE RISE (At Full Load)	80° C
DE BEARING	NU320 C3
ODE BEARING	6320 C3
REGREASING INT. - DE BEARING	1,300 Hours
REGREASING INT. - ODE BEARING	1,800 Hours
GREASE TYPE	LGHP2 (SKF)
MOUNTING	F1
ROTATION	Bi-Directional
SHAFT MATERIAL	4140 Carbon Steel
INVERTER RATING	10:1 CT / 20:1 VT PWM Type
CONNECTION DIAGRAM	460 V - 6 Lead Δ
APPROXIMATE WEIGHT	2649 lbs.





# WORLDWIDE ELECTRIC MOTOR DRAWING

## PEWWE-449T



**DIMENSIONS - INCHES**

MOUNTING					A	B	C	D	G	J	P	O	T	AB
E	2F1	2F2	H	BA										
9	25	---	0.81	7.5	22	31	58	11	1.575	3.35	24	23	4.25	19.5

KEY		KEYSET	SHAFT		TERMINAL BOX				
S	ES	R	N-W	U	AA	XB	XC	XD	XE
0.875	7.01	2.88	8.5	3.375	2 x 3"	4.7	12	11.5	---